

TEAM UNITY '24



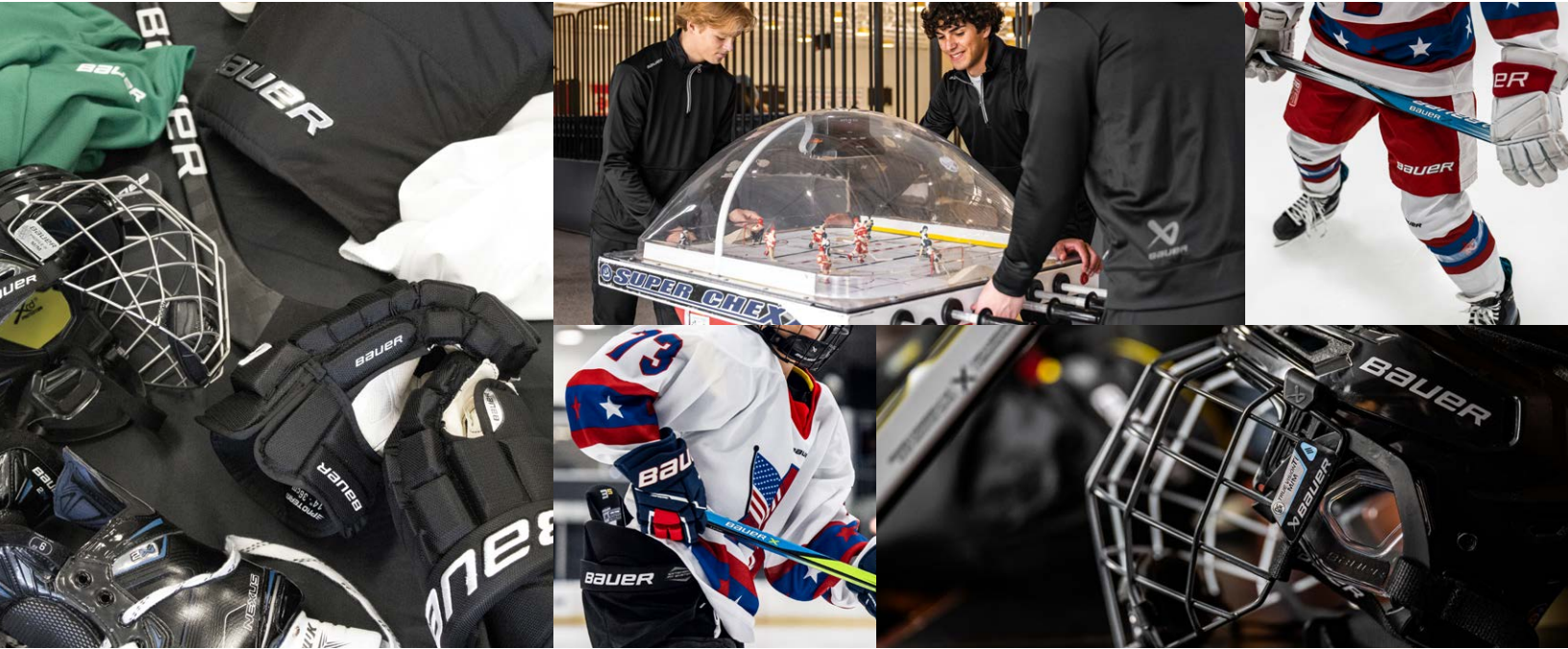
BAUER

BAUER_TEAM_UNITY_CATALOG

24

WHAT IS TEAM UNITY?

Bauer has developed a program that is committed to outfitting individual teams and associations both on and off the ice to create a unified look. By providing a one-stop solution, this program is now easily accessible to all levels and age groups looking to build their identity and elevate their game.



CONTENTS

TEAM APPAREL.....	3
PANTS.....	11
GLOVES	17
HELMETS	23
BAGS.....	29
GOAL	33
UNIFORMS	38
TEAM STICK.....	41
ADDITIONAL INFORMATION.....	42



BAUER_TEAM_UNITY // APPAREL

S24 BAUER TEAM PUFFER JACKET

COLOR	SR MATERIAL #	SR SIZES	YTH MATERIAL #	YTH SIZES
Black	[1063250]	S, M, L, XL, XXL	[1063278]	XXS, XS, S, M, L, XL
Navy	[1062334]	S, M, L, XL, XXL	[1063279]	XXS, XS, S, M, L, XL

FEATURES AND TECHNOLOGY

Fabric Content	100% Polyester Ripstop - Water Repellent
Fit	Tapered Hockey Fit
Features	PrimaLoft(R) Black Insulation RISE, 200 gsm YKK Zipper at center front and at pockets Adjustable hood Two inside storage pockets Durable contrast ripstop fabric along shoulders to keep bag straps from slipping Adjustable drawcord along hem
Customization	Can be post embellished



S22 BAUER SAIL RACING TRAVEL COAT

COLOR	SR MATERIAL #	SR SIZES
Gray	[1060214]	XS, S, M, L, XL, XXL

FEATURES AND TECHNOLOGY

Fabric Content	94% Polyester/6% Spandex
Fit	Tapered hockey fit
Features	Water resistant Primaloft Black Eco fill, 60g Insulation Embossed logo on sleeve Heavy duty logo locker loop at inside neck 3 piece hood, inner storm cuff and vent at back hem
Customization	Can be post embellished



S23 BAUER HOCKEY TEAM PUFFER VEST

COLOR	SR MATERIAL #	SR SIZES
Black	[1061015]	XS, S, M, L, XL, XXL
Navy	[1060747]	XS, S, M, L, XL, XXL

FEATURES AND TECHNOLOGY

Fabric Content	100% Polyester
Fit	Tapered hockey fit
Features	Primaloft® Black insulation RISE 200g, 100% post-consumer recycled content YKK® zippers at center front opening and front pockets Locker loop at inside back neck Shockcord and cordlock adjusters at inside hem
Customization	Can be post embellished



S23 BAUER TEAM WOVEN JOGGER

COLOR	SR MATERIAL #	SR SIZES	YTH MATERIAL #	YTH SIZES
Black	[1060778]	XS, S, M, L, XL, XXL	[1060806]	XXS, XS, S, M, L, XL
Navy	[1060779]	XS, S, M, L, XL, XXL	[1060805]	XXS, XS, S, M, L, XL

FEATURES AND TECHNOLOGY

Fabric Content	90% Polyester / 10% Spandex
Fit	Tapered hockey fit
Features	Stretch Woven Fabric Rib cuffs Slash pockets with additional hidden YKK® zipper pocket at right hip Encased elastic waistband with adjustable drawcord Logo on right hip
Customization	Can be post embellished



S24 BAUER TEAM LIGHTWEIGHT JACKET

COLOR	SR MATERIAL #	SR SIZES	YTH MATERIAL #	YTH SIZES
Black	[1063234]	XS, S, M, L, XL, XXL, XXXL	[1063266]	XXS, XS, S, M, L, XL
Navy	[1063235]	XS, S, M, L, XL, XXL, XXXL	[1063267]	XXS, XS, S, M, L, XL

FEATURES AND TECHNOLOGY

Fabric Content	100% Polyester Double Ripstop
Fit	Tapered Hockey Fit
Features	Bauer screen printed logo on sleeve and shoulder Bauer icon screenprinted on back neck YKK Zippers Front zipper pockets plus additional inside chest zip pocket Mesh venting on back shoulders Adjustable sleeve cuffs
Customization	Can be post embellished



S24 BAUER TEAM LIGHTWEIGHT PANT

COLOR	SR MATERIAL #	SR SIZES	YTH MATERIAL #	YTH SIZES
Black	[1063241]	XS, S, M, L, XL, XXL	[1063273]	XXS, XS, S, M, L, XL
Navy	[1063242]	XS, S, M, L, XL, XXL	[1063274]	XXS, XS, S, M, L, XL

FEATURES AND TECHNOLOGY

Fabric Content	100% Polyester Double Ripstop
Fit	Tapered Hockey Fit
Features	Bauer screenprinted logo on left leg Bauer icon screenprinted on right thigh On seam side pockets with YKK zippers Adjustable drawcord waist
Customization	Can be post embellished



S24 BAUER TEAM MIDWEIGHT JACKET

COLOR	SR MATERIAL #	SR SIZES	YTH MATERIAL #	YTH SIZES
Black	[1063236]	XS, S, M, L, XL, XXL, XXXL	[1063268]	XXS, XS, S, M, L, XL
Navy	[1063237]	XS, S, M, L, XL, XXL, XXXL	[1063269]	XXS, XS, S, M, L, XL

FEATURES AND TECHNOLOGY

Fabric Content	100% Polyester Double Ripstop / 100% Polyester Fleece
Fit	Tapered Hockey Fit
Features	Bauer screenprinted logo on sleeve and shoulder Bauer icon screenprinted on back neck YKK Zippers Front zipper pockets plus additional inside chest zip pocket Adjustable sleeve cuffs
Customization	Can be post embellished



S24 BAUER TEAM HEAVYWEIGHT JACKET

COLOR	SR MATERIAL #	SR SIZES	YTH MATERIAL #	YTH SIZES
Black	[1063238]	XS, S, M, L, XL, XXL, XXXL	[1063270]	XXS, XS, S, M, L, XL
Navy	[1063239]	XS, S, M, L, XL, XXL, XXXL	[1063271]	XXS, XS, S, M, L, XL
Red	[1063240]	XS, S, M, L, XL, XXL, XXXL	[1063272]	XXS, XS, S, M, L, XL

FEATURES AND TECHNOLOGY

Fabric Content	100% Polyester Double Ripstop / 100% Polyester Fill 150 gsm
Fit	Tapered Hockey Fit
Features	Bauer screenprinted logo on sleeve and shoulder Bauer icon screenprinted on hood Zip off removable hood YKK Zippers Front zipper pockets plus additional inside chest zip pocket Adjustable sleeve cuffs
Customization	Can be post embellished



S23 BAUER TEAM FLEECE 1/2 ZIP

COLOR	SR MATERIAL #	SR SIZES
Black	[1060772]	XS, S, M, L, XL, XXL
Navy	[1060774]	XS, S, M, L, XL, XXL
Grey	[1060773]	XS, S, M, L, XL, XXL
Red	[1061014]	XS, S, M, L, XL, XXL

FEATURES AND TECHNOLOGY

Fabric Content	100% Polyester
Fit	Tapered hockey fit
Features	Tech Fleece Fabric High-quality YKK® zippers Kangaroo pocket with additional zipper pocket Logos on shoulder and sleeve Logo tape locker loop
Customization	Can be post embellished



S23 BAUER TEAM FLEECE ZIP HOODIE

COLOR	SR MATERIAL #	SR SIZES	YTH MATERIAL #	YTH SIZES
Black	[1060780]	XS, S, M, L, XL, XXL	[1060807]	XXS, XS, S, M, L, XL
Navy	[1060781]	XS, S, M, L, XL, XXL	[1060808]	XXS, XS, S, M, L, XL
Grey	[1060782]	XS, S, M, L, XL, XXL	[1060809]	XXS, XS, S, M, L, XL
Red	[1060783]	XS, S, M, L, XL, XXL	[1060810]	XXS, XS, S, M, L, XL

FEATURES AND TECHNOLOGY

Fabric Content	100% Polyester
Fit	Tapered hockey fit
Features	Tech Fleece Fabric Lined hood Kangaroo pocket with additional YKK® zipper pocket at right Logo on shoulder and back hem Logo tape locker loop
Customization	Can be post embellished



S23 BAUER TEAM FLEECE JOGGER

COLOR	SR MATERIAL #	SR SIZES	YTH MATERIAL #	YTH SIZES
Black	[1060775]	XS, S, M, L, XL, XXL	[1060802]	XXS, XS, S, M, L, XL
Navy	[1060777]	XS, S, M, L, XL, XXL	[1060803]	XXS, XS, S, M, L, XL
Grey	[1060776]	XS, S, M, L, XL, XXL	[1060804]	XXS, XS, S, M, L, XL

FEATURES AND TECHNOLOGY

Fabric Content	100% Polyester
Fit	Tapered hockey fit
Features	Tech Fleece Fabric Slash pockets with additional YKK® zipper pocket at right hip Encased elastic waistband with adjustable drawcord Logo on right leg
Customization	Can be post embellished



S23 BAUER ULTIMATE HOODIE

COLOR	SR MATERIAL #	SR SIZES	YTH MATERIAL #	YTH SIZES
Black	[1060730]	XS, S, M, L, XL, XXL	[1060811]	XXS, XS, S, M, L, XL
Navy	[1060770]	XS, S, M, L, XL, XXL	[1060814]	XXS, XS, S, M, L, XL
Heather Grey	[1060768]	XS, S, M, L, XL, XXL	[1060813]	XXS, XS, S, M, L, XL
Red	[1060771]	XS, S, M, L, XL, XXL	[1060815]	XXS, XS, S, M, L, XL

FEATURES AND TECHNOLOGY

Fabric Content	85% Cotton / 15% Polyester
Fit	Retro fit
Features	Brushed Back Fleece Lined hood with drawcord and cordlock adjuster Rib cuffs and bottom band Logo on shoulder Kangaroo pocket Logo tape locker loop
Customization	Can be post embellished



S24 BAUER TEAM TECH HOODIE

COLOR	SR MATERIAL #	SR SIZES
Grey	[1063251]	XS, S, M, L, XL, XXL

FEATURES AND TECHNOLOGY

Fabric Content	100% Polyester Fleece
Fit	Tapered Hockey Fit
Features	Tech fleece fabric Lined hood with adjustable drawcord Tubular cuffs and bottom band Kangaroo pocket Bauer logo on right shoulder Bauer icon woven label on left sleeve
Customization	Can be post embellished



S24 BAUER TEAM POLO

COLOR	SR MATERIAL #	SR SIZES
Black	[1063264]	S, M, L, XL, XXL
Navy	[1063265]	S, M, L, XL, XXL
White	[1063263]	S, M, L, XL, XXL

FEATURES AND TECHNOLOGY

Fabric Content	100% Polyester
Fit	Tapered Hockey Fit
Features	Bauer logo on right shoulder Bauer icon woven label on hem Three button closure at collar
Customization	Can be post embellished



S24 BAUER TEAM SS TECH TEE

COLOR	SR MATERIAL #	SR SIZES	YTH MATERIAL #	YTH SIZES
Black	[1063253]	XS, S, M, L, XL, XXL	[1063281]	XXS, XS, S, M, L, XL
Navy	[1063254]	XS, S, M, L, XL, XXL	[1063283]	XXS, XS, S, M, L, XL
Grey	[1063252]	XS, S, M, L, XL, XXL	[1063282]	XXS, XS, S, M, L, XL
Red	[1063255]	XS, S, M, L, XL, XXL	[1063284]	XXS, XS, S, M, L, XL

FEATURES AND TECHNOLOGY

Fabric Content	100% Polyester
Fit	Tapered Hockey Fit
Features	Bauer screenprinted on right shoulder Bauer icon woven label on left sleeve Moisture wicking performance fabric HeiQ Fresh Technology to reduce the development of odor and help keep garments fresher for longer
Customization	Can be post embellished



S24 BAUER TEAM KNIT SHORT

COLOR	SR MATERIAL #	SR SIZES	YTH MATERIAL #	YTH SIZES
Black	[1063258]	XS, S, M, L, XL	[1063287]	XXS, XS, S, M, L, XL
Navy	[1063259]	XS, S, M, L, XL	[1063288]	XXS, XS, S, M, L, XL
Grey	[1063257]	XS, S, M, L, XL	[1063286]	XXS, XS, S, M, L, XL

FEATURES AND TECHNOLOGY

Fabric Content	94% Polyester 6% Spandex
Fit	Tapered Hockey Fit
Features	Bauer logo on left hem Bauer icon label on right hem Adjustable drawcord waist On seam pockets
Customization	Can be post embellished



S24 BAUER TEAM 1/2 ZIP PULLOVER

COLOR	SR MATERIAL #	SR SIZES
Black	[1063247]	S, M, L, XL, XXL
Navy	[1063248]	S, M, L, XL, XXL
White	[1063249]	S, M, L, XL, XXL

FEATURES AND TECHNOLOGY

Fabric Content	85% Cotton 15% Polyester Fleece / 100% Polyester Ripstop
Fit	Retro Fit
Features	Bauer icon lockup screenprinted at center Decorative Bauer logo tape around the body YKK zippers Kangaroo pocket
Customization	Can be post embellished



S24 BAUER TEAM MESH SNAPBACK

COLOR	SR MATERIAL #	SR SIZES	YTH MATERIAL #	YTH SIZES
Black	[1063356]	OSFM	[1063367]	OSFM
Navy	[1063225]	OSFM	[1063366]	OSFM
Grey	[1063224]	OSFM	[1063365]	OSFM

FEATURES AND TECHNOLOGY

Fabric Content	100% Polyester
Fit	Structured Pro Fit
Features	Bauer logo embroidered on left side of visor Bauer icon woven label on right side of visor Six panel hat with mesh sides and back
Customization	Can be post embellished



S24 BAUER TEAM RIBBED POM

COLOR	SR MATERIAL #	SR SIZES
Black	[1063358]	OSFM
Navy	[1063359]	OSFM
Red	[1063360]	OSFM

FEATURES AND TECHNOLOGY

Fabric Content	100% Acrylic
Fit	Knit Cuff Toque with Pom
Features	Bauer icon and logo jacquarded into white panel above cuff Bauer icon woven label on front side of cuff Open space to post embellish on front of cuff 2 color pom at top of hat
Customization	Can be post embellished



S24 BAUER TEAM RIBBED TOQUE

COLOR	SR MATERIAL #	SR SIZES
Black	[1063362]	OSFM
Navy	[1063363]	OSFM
Grey	[1063361]	OSFM
Red	[1063364]	OSFM

FEATURES AND TECHNOLOGY

Fabric Content	100% Acrylic
Fit	Knit Cuff Toque
Features	Fleece lined Bauer embroidered on back center cuff Bauer icon woven label on front side of cuff
Customization	Open space to post embellish on front of cuff Can be post embellished



BAUER HOCKEY HOODED PUFFER - WMN

COLOR	WMN MATERIAL #	SR SIZES
Black	[1057009]	XXS, XS, S, M, L, XL

FEATURES AND TECHNOLOGY

Fabric Content	Body: 100% Nylon • Lining/Fill: 100% Polyester
Fit	Hockey fit
Features	Tapered Hockey Fit BAUER silicone patch on wearer's left sleeve Screen printed logo on wearer's right chest PrimaLoft® insulation High-quality YKK® zippers Rib storm cuff on sleeve
Customization	Post embellishment access zipper



BAUER VAPOR FLEECE HOODIE - WMN

COLOR	WMN MATERIAL #	SR SIZES
Black	[1056962]	XS, S, M, L, XL, XXL

FEATURES AND TECHNOLOGY

Fabric Content	100% Polyester
Fit	Hockey fit
Features	BAUER screen printed logo at wearer's right chest BAUER screen printed logo at wearer's left sleeve On seam kangaroo pocket with TPU bartacks BAUER screen printed neck tape with integrated locker loop
Customization	Can be post embellished



BAUER VAPOR FLEECE JOGGER PANT - WMN

COLOR	WMN MATERIAL #	SR SIZES
Black	[1056951]	XXS, XS, S, M, L, XL

FEATURES AND TECHNOLOGY

Fabric Content	100% Polyester
Fit	Hockey fit
Features	BAUER heat transfer logo at wearer's right thigh Angled pockets with hidden YKK® zipper pocket on wearer's right Adjustable drawcord waist TPU bartacks
Customization	Can be post embellished



BAUER VAPOR TEAM TECH TEE - WMN

COLOR	WMN MATERIAL #	SR SIZES
Heather Grey	[1056942]	XS, S, M, L, XL, XXL

FEATURES AND TECHNOLOGY

Fabric Content	100% Polyester
Fit	Hockey fit
Features	BAUER heat transfer logo at wearer's left chest Tagless back neck label
Customization	Can be post embellished



APPAREL SIZING CHARTS

MEN (Measurements in US Standard & Metric)

SIZE		XXS	XS	S	M	L	XL	XXL	XXXL
CHEST	[IN]	-	35" - 36"	37" - 38"	39" - 40"	41" - 43"	44" - 46"	47" - 49"	50" - 53"
	[CM]	-	89 - 91	94 - 97	99 - 102	104 - 109	112 - 117	119 - 125	127 - 135
WAIST	[IN]	-	27" - 28"	29" - 30"	31" - 33"	34" - 35"	36" - 37"	38" - 40"	41" - 44"
	[CM]	-	69 - 71	74 - 76	79 - 84	86 - 89	91 - 94	97 - 102	104 - 112
SEAT	[IN]	-	34" - 35"	36" - 37"	38" - 39"	41" - 42"	43" - 44"	45" - 47"	48" - 51"
	[CM]	-	86 - 89	91 - 94	97 - 99	104 - 107	109 - 112	114 - 119	122 - 130
HEIGHT	[IN]	-	5'1" - 5'5"	5'5" - 5'9"	5'9" - 5'11"	5'11" - 6'1"	6'1" - 6'3"	6'3" - 6'5"	6'4" - 6'6"
	[CM]	-	155 - 165	165 - 175	175 - 180	180 - 185	185 - 191	191 - 196	193 - 198

WOMEN (Measurements in US Standard & Metric)

SIZE		XXS	XS (2)	S (4 - 6)	M (8 - 10)	L (12 - 14)	XL (16 - 18)	XXL	XXXL
CHEST	[IN]	28" - 30"	30" - 32"	32" - 34"	35" - 37"	38" - 40"	41" - 43"	-	-
	[CM]	71 - 76	76 - 81	81 - 86	89 - 94	97 - 102	104 - 109	-	-
WAIST	[IN]	21" - 23"	23" - 25"	25" - 26"	27" - 29"	30" - 32"	33" - 35"	-	-
	[CM]	53 - 58	58 - 64	64 - 66	69 - 74	76 - 81	84 - 89	-	-
SEAT	[IN]	31" - 33"	33" - 35"	35" - 37"	37" - 39"	40" - 42"	43" - 45"	-	-
	[CM]	79 - 84	84 - 89	89 - 94	94 - 99	102 - 107	109 - 114	-	-
HEIGHT	[IN]	4'10" - 5'2"	5' - 5'4"	5'1" - 5'5"	5'2" - 5'6"	5'3" - 5'7"	5'4" - 5'8"	-	-
	[CM]	147 - 158	152 - 163	155 - 165	157 - 168	160 - 170	163 - 173	-	-

YOUTH (Measurements in US Standard & Metric)

SIZE		XXS (4)	XS (5 - 6)	S (7 - 8)	M (10 - 12)	L (14 - 16)	XL (18)	XXL	XXXL
CHEST	[IN]	22" - 23"	24" - 26"	26" - 29"	29" - 32"	32" - 34.5"	34.5" - 35.5"	-	-
	[CM]	56 - 58	61 - 66	66 - 74	74 - 81	81 - 88	88 - 90	-	-
WAIST	[IN]	21" - 22"	22.5" - 23.5"	23.5" - 24.5"	24.5" - 25.5"	25.5" - 27.5"	27.5" - 29.5"	-	-
	[CM]	53 - 56	57 - 60	60 - 62	62 - 65	65 - 70	70 - 75	-	-
SEAT	[IN]	23" - 24"	24.5" - 25.5"	26.5" - 28.5"	28.5" - 30.5"	30.5" - 33.5"	33.5" - 35.5"	-	-
	[CM]	58 - 61	62 - 65	67 - 72	72 - 78	78 - 85	85 - 90	-	-
HEIGHT	[IN]	3'3" - 3'8"	3'9" - 4'2"	4'2" - 4'7"	4'7" - 4'11"	4'11" - 5'4"	5'4" - 5'6"	-	-
	[CM]	99 - 112	114 - 127	127 - 140	127 - 140	150 - 163	163 - 168	-	-

NEW ERA HEADWEAR SIZING CHART

SENIOR (Measurements in US Standard & Metric)

FITTED	6 7/8	7	7 1/8	7 1/4	7 3/8	7 1/2	7 5/8	7 3/4	7 7/8	8	8 1/8
[IN]	21 5/8	22	22 3/8	23 1/8	23 1/2	23 7/8	24 1/4	24 5/8	7 7/8	25	25 3/8
[CM]	54.9	55.8	56.8	57.7	58.7	59.6	60.6	61.5	62.5	63.5	64.5

YOUTH (Measurements in US Standard & Metric)

FITTED	6	6 1/8	6 1/4	6 3/8	6 1/2	6 5/8	6 3/4	6 7/8	7
[IN]	19	19 3/8	19 3/4	20 1/8	20 1/2	20 7/8	21 1/4	21 5/8	22
[CM]	48.2	49.2	50.1	51.1	52	53	53.9	54.9	55.8



BAUER_TEAM_UNITY // PANTS

BAUER

S24 BAUER HP PRO PANT

SENIOR
INTERMEDIATE
JUNIOR

[1063662]
[1063663]
[1063664]

M, L, XL
M, L
S, M, L

FEATURES AND TECHNOLOGY

Level	Performance
Spine	Independant spine with CURV Composite protection
Kidney	One-piece kidney with lightweight HD foam insert
Hip	Classic fit One-piece hip guard with DC TECH foam insert
Thigh Guard	Molded PE and HD foam, removable for post embellishment
Belt	Wrap around belt with side release buckle
Adjustability	Extension fit +1"
Shell	Pro level 840D Nylon with overlay and stretch zone
Color	BLK, NAV, RED, BLU



CUSTOM NEXUS ELITE PANT

SENIOR
SENIOR DS

[1043702]
[1043783]

S, M, L, XL, XXL
S, M, L, XL, XXL

FEATURES AND TECHNOLOGY

Construction	Volume fit, pro level protection and quality Custom logo and stripes included in price.
Colors	Custom color menu
Embellishments	Direct Embroidered Bauer logo Embroidered Patch Team logo

MINIMUM OF 12 UNITS PER PANT / SHELL TYPE
DIRECT SHIP ITEMS: RUSH 60 DAYS



DS RT BAUER SPEED PANT 2.0

SENIOR
JUNIOR
YOUTH

[1060738]
[1060739]
[1060740]

S, ST, M, MT, L, LT, XL,
XLT, XXL, XXXT
S, M, L, XL
S, M, L, XL

FEATURES AND TECHNOLOGY

Fit	Anatomical Fit
Spine	Integrated spine with HDPE insert
Kidney	Segmented kidney vs 1-piece molded
Hip	Full volume barrel fit with HDPE protection
Thigh Guard	Segmented with 1" more coverage vs 1-piece
Belt	Wrap around belt with cinching closure
Adjustability	Extension Fit + 1" through button adjustment
Shell	Pro level 850D Nylon with overlay and stretch zone
Liner	THERMO Max liner
Color	Custom Colors

MINIMUM OF 12 UNITS PER PANT / SHELL TYPE
DIRECT SHIP ITEMS: RUSH 60 DAYS



CUSTOM NEXUS PERF PANT - WMNS

WOMENS
WOMENS DS

[1043788]
[1043789]

S, M, L, XL
S, M, L, XL

FEATURES AND TECHNOLOGY

MINIMUM OF 12 UNITS PER PANT / SHELL TYPE
DIRECT SHIP ITEMS: RUSH 60 DAYS

Construction	Volume fit, pro level protection and quality Custom logo and stripes included in price.
Colors	Custom color menu
Embellishments	Direct Embroidered Bauer logo Embroidered Patch Team logo



CUSTOM NEXUS COVER SHELL

SENIOR DS
JUNIOR DS
YOUTH DS

[1043793]
[1043795]
[1043797]

S, M, L, XL, XXL
S, M, L, XL
S, M, L

FEATURES AND TECHNOLOGY

MINIMUM OF 12 UNITS PER PANT / SHELL TYPE
DIRECT SHIP ITEMS: RUSH 60 DAYS

Construction	Designed to fit over a pant 420 Denier nylon and vented back Custom logo and stripes included in price.
Colors	Custom color menu
Embellishments	Direct Embroidered Bauer logo Embroidered Patch Team logo



TEAM PANT COVER SHELL

SENIOR
JUNIOR

[1047791]
[1047792]

S, M, L, XL, XXL, XXXL
S, M, L

FEATURES AND TECHNOLOGY

Construction	Designed to fit over pant Skate lace closure system Vented back with 420 denier nylon shell
Colors	Custom color menu
Embellishments	Direct Embroidered Bauer logo Embroidered Patch Team logo
Custom Colors	Black, Navy, Blue, Red



CUSTOM PANTS

HOW-TO CUSTOMIZE

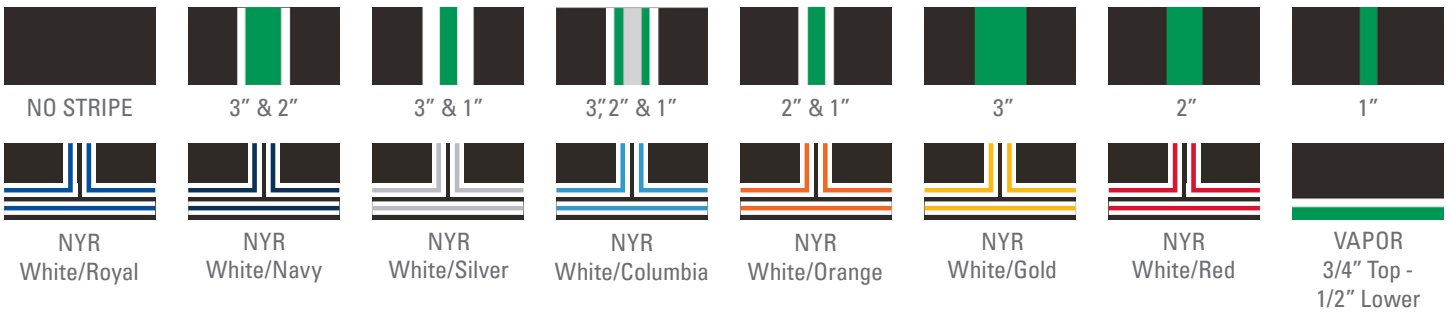
A CHOOSE YOUR PANT OR SHELL

SELECT YOUR PANT / PANT SHELL BASE COLOR FROM ONE OF OUR 17 BAUER APPROVED TEAM COLORS

- | | | | | | |
|-----------|--------------|------------|---------------|----------------|------------|
| 1. Black | 4. Dark Navy | 7. Royal | 10. Maroon | 13. Dark Green | 16. Orange |
| 2. White | 5. Navy | 8. Red | 11. Purple | 14. Green | 17. Brown |
| 3. Silver | 6. Blue | 9. Phoenix | 12. LA Purple | 15. Kelly | |

B STRIPING OPTIONS

CHOOSE A STRIPING PATTERN THAT BEST REPRESENTS YOUR TEAM OR ASSOCIATION AND THEN FINISH IT OFF WITH YOUR TEAM COLORS TO GIVE IT A TRULY UNIFIED LOOK



SELECT STRIPING COLOR FROM ONE OF OUR 25 BAUER APPROVED TEAM COLORS | *COLORS NOT OFFERED ON NYR STRIPING OPTIONS

- | | | | | | | | | |
|-----------|--------------|------------|---------------|----------------|------------|------------|--------------|-----------------|
| 1. Black | 4. Dark Navy | 7. Royal | 10. Maroon | 13. Dark Green | 16. Orange | 19. Vegas | 22. Gold | 25. Powder Blue |
| 2. White | 5. Navy | 8. Red | 11. Purple | 14. Green | 17. Brown | 20. Sand | 23. Teal | |
| 3. Silver | 6. Blue | 9. Phoenix | 12. LA Purple | 15. Kelly | 18. Pitt | 21. Yellow | 24. Columbia | |

C BAUER EMBROIDERY COLOR

CUSTOMIZE THE BAUER BRANDING ON THE PANT TO MATCH THE TEAM / STRIPING COLORS. NOTE: WE CANNOT EXECUTE TONE-ON-TONE APPLICATIONS (I.E. RED PANT WITH RED BAUER BRANDING)



D EMBROIDERY TEAM LOGO

CUSTOMIZE YOUR TEAM'S PANT / SHELL BY ADDING AN EMBROIDERED LOGO TO THE RIGHT LEG OF THE PANT.



SIZING CHARTS

BAUER PLAYER PANTS (Measurements in US Standard & Metric)

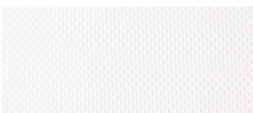
SIZE	YOUTH			JUNIOR				SENIOR					WOMEN			
	S	M	L	S	M	L	XL	S	M	L	XL	XXL	S	M	L	XL
WEIGHT [LBS]	40-60	45-65	50-70	60-90	70-100	80-110	90-120	120-160	140-180	160-200	180-220	200+	90-120	100-130	110-140	120-150
HEIGHT [IN]	3'3"-4'1"	3'7"-4'4"	3'9"-4'7"	4'3"-4'8"	4'7"-5'	4'11"-5'4"	5'3"-5'8"	5'5"-5'9"	5'7"-5'11"	5'9"-6'1"	5'11"-6'3"	6'1"+	4'5"-5'3"	4'7"-5'5"	4'9"-5'7"	5'1"-5'9"
PANT SIZE [IN]	20"-22"	21"-23"	21"-23"	22"-24"	24"-26"	26"-28"	28"-30"	30"-34"	32"-36"	34"-38"	36"-40"	40"+	24"-27"	26"-29"	28"-31"	30"-33"

BAUER GOAL PANTS (Measurements in US Standard & Metric) *Measure waist circumference where your pants naturally sit, then subtract 3" for men, 4" for women

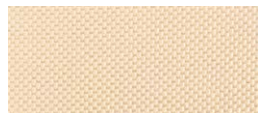
SIZE	YOUTH		JUNIOR		INTERMEDIATE			SENIOR			
	S/M	L/XL	S/M	L/XL	S	M	L	S	M	L	XL
WEIGHT [LBS]	40 - 53	46 - 57	55 - 68	62 - 79	77 - 90	88 - 99	97 - 130	99 - 150	130 - 170	150 - 190	180+
[KG]	18 - 24	21 - 26	25 - 31	28 - 36	35 - 41	40 - 45	44 - 59	45 - 68	59 - 77	68 - 86	82+
HEIGHT [FT]	3'5" - 3'11"	3'8" - 4'2"	4'1" - 4'8"	4'4" - 4'11"	4'10" - 5'2"	5'1" - 5'5"	5'4" - 5'7"	5'5" - 5'9"	5'7" - 5'11"	5'9" - 6'1"	5'11+
[M]	1.04 - 1.19	1.12 - 1.27	1.24 - 1.42	1.32 - 1.5	1.47 - 1.57	1.55 - 1.65	1.63 - 1.7	1.65 - 1.75	1.7 - 1.8	1.75 - 1.85	1.8+
PANT SIZE [IN]	20" - 22"	21" - 23"	22" - 25"	23" - 26"	25" - 28"	27" - 30"	29" - 32"	30" - 34"	32" - 36"	34" - 38"	36"+
[CM]	51 - 56	53 - 58	56 - 64	58 - 66	64 - 71	69 - 76	74 - 81	76 - 86	81 - 91	86 - 97	91+

COLORS

PANT SWATCHES



White



Sand
(Stripe Only)



Pitt
(Stripe Only)



Vegas
(Stripe Only)



Brown



Silver



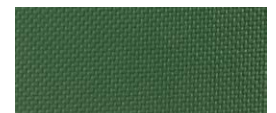
Black



Dark Green



Green



Kelly



Teal
(Stripe Only)



Powder Blue
(Stripe Only)



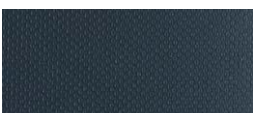
Columbia
(Stripe Only)



Royal



Blue



Navy



Dark Navy



Purple



LA Purple



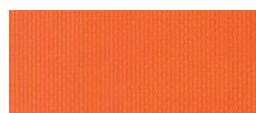
Maroon



Phoenix



Red



Orange



Gold
(Stripe Only)



Yellow
(Stripe Only)

DS S23 BAUER GOAL SPEED PANT RT-DS

SENIOR [1063006] S, M, L, XL
 INTERMEDIATE [1063007] S, M, L
 JUNIOR [1063116] S/M, L/XL

MINIMUM OF 12 UNITS PER PANT / SHELL TYPE
 DIRECT SHIP ITEMS: RUSH 60 DAYS

FEATURES AND TECHNOLOGY

Construction
 Removable (Inner) - Dual Inner/Outer
 Volume Fit Thick Foam for protection and coverage
 Reinforced Velcro Double Adjustment Pillows
 Tucked Free-Flex (Skate Lace Style) for mobility and pro look
 Dynamic Two Flex with Double Adjustment Pillows
 Internal Loop
 Thermomax + for breathability
 Extension Fit System

Colors Custom color menu

Embellishments Direct Embroidered Bauer logo
 Embroidered Patch Team logo



S20 BAUER ELITE GOAL PANT

SENIOR [1061618] S, M, L, XL
 SENIOR MTO [1061619] S, M, L, XL
 INTERMEDIATE [1061620] S, M, L
 INTERMEDIATE MTO [1061621] S, M, L

FEATURES AND TECHNOLOGY

Construction
 Removable (Inner) - Dual Inner/Outer
 Volume Fit Thick Foam for protection and coverage
 Reinforced Velcro Double Adjustment Pillows
 Tucked Free-Flex (Skate Lace Style) for mobility and pro look
 Dynamic Two Flex with Double Adjustment Pillows
 Internal Loop
 Thermomax + for breathability
 Extension Fit System

Colors Black, MTO - Navy and Red

Embellishments Direct Embroidered Bauer logo



CUSTOM GOAL PANT SHELL

SENIOR DS [1041431] S, M, L, XL, XXL
 INTERMEDIATE DS [1041432] S, M, L

MINIMUM OF 12 UNITS PER PANT / SHELL TYPE
 DIRECT SHIP ITEMS: RUSH 60 DAYS

FEATURES AND TECHNOLOGY

Construction Abrasion-resistant hip overlay (800 denier nylon/420 shell); Shell size is typically one size larger than pant size

Colors Custom color menu

Embellishments Direct Embroidered Bauer log
 Embroidered Patch Team logo



STOCK BAUER GOAL SHELL

SENIOR [1048526] S, M, L, XL, XXL
 INTERMEDIATE/JR [1048527] S, M, L

FEATURES AND TECHNOLOGY

Construction Abrasion-resistant hip overlay (800 denier nylon/420 shell); Shell size is typically one size larger than pant size

Colors Black, Navy, Blue, Red

Embellishments Direct Embroidered Bauer logo





BAUER_TEAM_UNITY // GLOVES

CUSTOM TEAM PRO SERIES

SENIOR	[1058664]	14", 15"
INTERMEDIATE	[1058665]	12", 13"
JUNIOR	[1060752]	10", 11"

FEATURES AND TECHNOLOGY

Backhand	Dual density foam with Hyperlite HD & PE insert
Fingers	Dual density foam with Hyperlite HD & PE insert
Thumb	2-Piece Flex thumb
Shell	PRO Lite Tex + Cable mesh
Cuff roll	Molded cuff roll with 3D embroidered logo
Palm	Dual Layer Micro suede Ivory PRO PALM
Gusset	Pro style finger tip gusset
Liner	HYPER SENSE finger liner + THERMOMAX backhand pad



4-Piece Back Roll

3D 2-Color Bauer Embroidery

Team Name & Logo Embroidery

Contrasting Thumb Binding

FIT PROFILE

Full volume fit - with a wider fit in the cuff and wider fit through the fingers, 4-roll pro team glove maximizes control with ample wrist mobility.

BAUER BRANDING

2-color 3D embroidery stitched directly into wrist cuff

EMBELLISHMENT

Team logo and name embroidered directly on the thumb of both gloves. Six color maximum with limited detail. Team name character limitations:

Senior: 13 / Junior: 12 / Youth: 10

UNIQUE DESIGNS

Added customizable options allow for teams to have truly unique designed gloves on the ice.

HOW-TO CUSTOMIZE

ZONE 1 BASE COLOR	ZONE 2 BINDING	ZONE 3 CUFF ROLL	ZONE 4 FINGERS	ZONE 5/6 BAUER LOGO	EMBELLISHMENT ZONE																	
AVAILABLE IN 23 STANDARD BAUER COLORS					EMBROIDERED TEAM NAME & LOGO																	
BLK	BLU	SIL	GLD	NAV	PUR	YEL	DGR	VGS	MAR	BRN	SND	RED	KEL	WHT	ORG	TEA	ROY	CLB	PHO	PIT	GRN	LAP

EXAMPLES OF POSSIBLE COLOR COMBOS



CUSTOM TEAM VAPOR PRO

SENIOR	[1058661]	14", 15"
INTERMEDIATE	[1058662]	12", 13"
JUNIOR	[1058663]	10", 11"



FEATURES AND TECHNOLOGY

Backhand	Dual density foam with Hyperlite HD & PE insert
Fingers	Dual density foam with Hyperlite HD & PE insert
Thumb	2-Piece Flex thumb
Shell	PRO Lite Tex + Cable mesh
Cuff roll	Molded cuff roll with 3D embroidered logo
Palm	Dual Layer Micro suede Ivory PRO PALM
Gusset	Pro style finger tip gusset
Liner	HYPER SENSE finger liner + THERMOMAX backhand pad

4-Piece Back Roll

3D 2-Color Bauer Embroidery

Team Name & Logo Embroidery

Contrasting Thumb Binding

FIT PROFILE

Tapered fit - with a wider fit in the cuff and standard fit through the fingers, pro team glove maximizes control with ample wrist mobility. With a 3-piece index finger construction, mobility is maximized.

BAUER BRANDING

2-color 3D embroidery stitched directly into wrist cuff

EMBELLISHMENT

Team logo and name embroidered directly on the thumb of both gloves. Six color maximum with limited detail. Team name character limitations:

Senior: 13 / Junior: 12 / Youth: 10

UNIQUE DESIGNS

Added customizable options allow for teams to have truly unique designed gloves on the ice.

HOW-TO CUSTOMIZE

ZONE 1 BASE COLOR	ZONE 2 BINDING	ZONE 3 CUFF ROLL	ZONE 4 FINGERS	ZONE 5/6 BAUER LOGO	EMBELLISHMENT ZONE																	
AVAILABLE IN 23 STANDARD BAUER COLORS					EMBROIDERED TEAM NAME & LOGO																	
BLK	BLU	SIL	GLD	NAV	PUR	YEL	DGR	VGS	MAR	BRN	SND	RED	KEL	WHT	ORG	TEA	ROY	CLB	PHO	PIT	GRN	LAP

EXAMPLES OF POSSIBLE COLOR COMBOS



CUSTOM TEAM VAPOR ELITE

SENIOR	[1058666]	14", 15"
INTERMEDIATE	[1058667]	12", 13"
JUNIOR	[1058668]	10", 11"
YOUTH	[1058669]	8", 9"



FEATURES AND TECHNOLOGY

Backhand	MID density foam & PE insert
Fingers	MID density foam & PE insert
Thumb	2-Piece Flex thumb
Shell	PRO Lite Tex +
Cuff roll	Molded cuff roll with 3D embroidered logo
Palm	Dual Layer light grey CONNEKT palm
Gusset	PolyKnit gusset
Liner	THERMOMAX

34-Piece Back Roll

3D 2-Color Bauer Embroidery

Team Name & Logo Embroidery

Grip Comfort

FIT PROFILE

Tapered fit - with a wider fit in the cuff and standard fit through the fingers, team glove maximizes control with ample wrist mobility.

BAUER BRANDING

2-color 3D embroidery stitched directly into wrist cuff.

EMBELLISHMENT

Team logo and name embroidered directly on the thumb of both gloves. Six color maximum with limited detail. Team name character limitations:

Senior: 13 / Junior: 12 / Youth: 10

INSIDE PALM

Dual Layer light grey CONNEKT palm.

HOW-TO CUSTOMIZE

ZONE 1 BASE COLOR	ZONE 2 CUFF ROLL	ZONE 3 BAUER LOGO FILL	ZONE 4 BAUER LOGO OUTLINE	EMBELLISHMENT ZONE																							
AVAILABLE IN 23 STANDARD BAUER COLORS																											
<table border="0"> <tr> <td>BLK</td><td>BLU</td><td>SIL</td><td>GLD</td><td>NAV</td><td>PUR</td><td>YEL</td><td>DGR</td><td>VGS</td><td>MAR</td><td>BRN</td><td>SND</td><td>RED</td><td>KEL</td><td>WHT</td><td>ORG</td><td>TEA</td><td>ROY</td><td>CLB</td><td>PHO</td><td>PIT</td><td>GRN</td><td>LAP</td> </tr> </table>					BLK	BLU	SIL	GLD	NAV	PUR	YEL	DGR	VGS	MAR	BRN	SND	RED	KEL	WHT	ORG	TEA	ROY	CLB	PHO	PIT	GRN	LAP
BLK	BLU	SIL	GLD	NAV	PUR	YEL	DGR	VGS	MAR	BRN	SND	RED	KEL	WHT	ORG	TEA	ROY	CLB	PHO	PIT	GRN	LAP					

EXAMPLES OF POSSIBLE COLOR COMBOS



TEAM VAPOR PRO GLOVE

SENIOR	[1058657]	14", 15"
INTERMEDIATE	[1058658]	12", 13"
JUNIOR	[1058659]	10", 11"

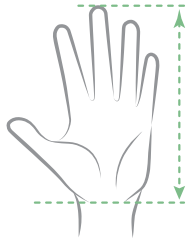
FEATURES AND TECHNOLOGY

Size/Construction	Dual density foam with Hyperlite HD & PE inserts Flex lock thumb Patented 2-piece Flex Lock Thumb 3-Piece index finger
Colors	Black, Navy, Red



SIZING CHART

BAUER HOCKEY GLOVES (Measurements in US Standard & Metric)



Measure from tip of middle finger to wrist crease.

	YOUTH		JUNIOR		INTERMEDIATE		SENIOR	
SIZE	S (8")	M (9")	S (10")	M (11")	M (12")	L (13")	M (14")	L (15")
AGE	3-5	5-7	8-10	10-11	11-13	13+	14+	15+
WEIGHT	31 - 42lbs 14 - 19kg	40 - 53lbs 18 - 24kg	53 - 68lbs 24 - 31kg	66 - 79lbs 30 - 36kg	77 - 79lbs 36 - 45kg	99 - 150lbs 45 - 68kg	130 - 170lbs 59 - 77kg	150 - 190lbs 68 - 86kg
HEIGHT	3'0" - 3'6" 0.91 - 1.07m	3'5" - 3'11" 1.04 - 1.19m	4'2" - 4'8" 1.27 - 1.42m	4'7" - 4'11" 1.40 - 1.50m	4'10" - 5'5" 1.47 - 1.65m	5'5" - 5'9" 1.65 - 1.75m	5'7" - 5'11" 1.70 - 1.80m	5'9" - 6'1" 1.75 - 1.85m
LENGTH	4" - 5" 10.5 - 13cm	4" - 5" 11.5 - 14cm	4" - 5" 13 - 15.5cm	4" - 5" 14 - 16.5cm	4" - 5" 15.5 - 18cm	4" - 5" 16.5 - 19cm	4" - 5" 18 - 20.5cm	4" - 5" 19 - 22cm

COLORS

GLOVE SWATCHES







ER

BAUER

BAUER_TEAM_UNITY // HELMETS

BAUER HYPERLITE2 HELMET

HELMET

[1061815]

S/M, M/L

FEATURES AND TECHNOLOGY

Performance	Lightweight AEROLITE base combined with GX-CELLS & DCT Liner; CSA, HECC, CE, UKCA certified
Customized Fit	Adjustable Occipital Lock + FreeForm Adjustment system offers independent width and length adjustment with a locked in feel
Comfort	GX-CELLS combine comfort with an energy mitigation system, DCT temple padding + comfort wrap
Colors	Black, Navy, Blue, Red, White



S24 BAUER RE-AKT 155

HELMET
COMBO[1063646]
[1063648]S, M, L
S, M, L

FEATURES AND TECHNOLOGY

Performance	EVA Expancell, AV-Form Pod; Molded, multi-density liner for maximum coverage; CSA, HECC, CE, UKCA certified
Customized Fit	FreeForm Adjustment system offers independent width and length adjustment
Comfort	Soft to the touch DCT Foam, spring loaded occipital
Combo	Includes a Bauer II Facemask Stainless steel construction with Tru-Vision for enhanced sight lines CSA, HECC, CE, UKCA certified
Colors	Helmets: Black, White, Navy, Red, Blue Combos: Black, White



BAUER RE-AKT 85 HELMET

HELMET
COMBO[1059882]
[1060010]S, M, L
S, M, L

FEATURES AND TECHNOLOGY

Performance	AEROLITE 3.0; molded, multi-density liner for maximum coverage; CSA, HECC, CE, UKCA certified
Customized Fit	FreeForm Adjustment system offers independent width and length adjustment
Comfort	DCT Liner in key sensitive areas; THERMO CORE ZERO liner to manage sweat and odors
Combo	Includes a Bauer I Facemask Carbon steel construction with oval wire for enhanced vision CSA, HECC, CE, UKCA certified
Colors	Black, White, Navy



COLORS

HELMET SWATCHES



VISORS & FACEMASK

BAUER PRO-CLIP: WAVE

CLEAR [1050366] LARGE

FEATURES AND TECHNOLOGY

Performance Updated interior anti-fog coating
Enhanced exterior anti-scratch coating
True Optics technology
CSA, HECC, CE certified

Construction High-impact polycarbonate shield
Exclusive QUICK-CLICK+ feature allows tool-less shield replacement
Wave Cut

Colors Clear



BAUER PRO-CLIP: STRAIGHT

CLEAR SMOKE [1050354] [1050365] MEDIUM MEDIUM

FEATURES AND TECHNOLOGY

Performance Updated interior anti-fog coating
Enhanced exterior anti-scratch coating
True Optics technology
CSA, HECC, CE certified

Construction High-impact polycarbonate shield
Exclusive QUICK-CLICK+ feature allows tool-less shield replacement
Wave Cut

Colors Clear



BAUER PRO-CLIP: REPL LENS (2 SET)

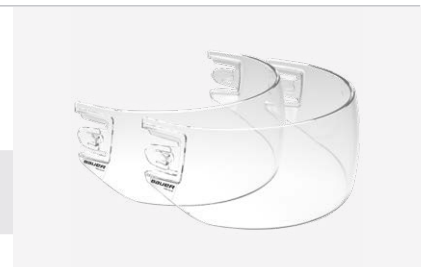
CLEAR [1050368] MEDIUM

FEATURES AND TECHNOLOGY

Performance Updated interior anti-fog coating
Enhanced exterior anti-scratch coating
True Optics technology
CSA, HECC, CE certified
2 replacement lenses

Construction High-impact polycarbonate shield
Exclusive QUICK-CLICK+ feature allows tool-less shield replacement
Straight Cut

Colors Clear



BAUER I FACEMASK

[1061822] XS, S, M, L

FEATURES AND TECHNOLOGY

Performance DCT density floating chin cup with moisture channels
CSA, HECC, CE, UKCA certified

Construction Optimized geometry with impact carbon steel wire
Unique wire configuration

Colors Black, I2 (Black outside / White Inside), White



BAUER II FACEMASK

[1061821] XS, S, M, L

FEATURES AND TECHNOLOGY

Performance DCT density floating chin cup with moisture channels
CSA, HECC, CE, UKCA certified

Construction Optimized geometry with stainless steel wires offer high impact
absorption in a lightweight cage offering
True Vision wire decreases obstructions in the players field of vision
with narrow wire strategically placed throughout the facemask

Colors Black, I2 (Black outside / White Inside), White



BAUER CONCEPT 3 FULL VISOR

SR [1041010]
JR [1041011]

FEATURES AND TECHNOLOGY

Performance Interior anti-fog coating; Enhanced, exterior anti-scratch coating;
Sr floating chin-cup
BAUER Helmet bag included; CSA, HECC, CE certified

Construction High-impact polycarbonate shield; Strategic vent locations; Expanded visual area

Colors Clear



DS BAUER HYPERLITE2 HELMET

HELMET

[1061818]

S/M, M/L

FEATURES AND TECHNOLOGY

Performance	SHOCKLITE Foam Technology for lightweight impact protection Molded XRD® comfort liner; CSA, HECC, CE Certified
Customized Fit	FreeForm Adjustment system offers independent width and length adjustment
Comfort	Molded memory foam comfort liner with XRD® foam; Moisture channels to promote cooling
Custom Colors	Black, Navy, Blue, Red, White, Gold, Maroon, Phoenix, Wine, LA Purple, Green, Kelly, Dark Green, Royal, Brown, Vegas, Silver, Vegas Grey



S24 BAUER RE-AKT 155

HELMET
COMBO

[1063646]
[1063648]

S, M, L
S, M, L

FEATURES AND TECHNOLOGY

Performance	EVA Expancell, AV-Form Pod; Molded, multi-density liner for maximum coverage; CSA, HECC, CE, UKCA certified
Customized Fit	FreeForm Adjustment system offers independent width and length adjustment
Comfort	Soft to the touch DCT Foam, spring loaded occipital
Combo	Includes a Bauer II Facemask Stainless steel construction with Tru-Vision for enhanced sight lines CSA, HECC, CE, UKCA certified
Colors	Helmets: Black, White, Navy, Red, Blue Combos: Black, White



DS BAUER RE-AKT 85 HELMET

HELMET
COMBO

[1060519]
[1060531]

S, M, L
S, M, L

FEATURES AND TECHNOLOGY

Performance	AEROLITE 3.0 Molded, multi-density liner for maximum protection CSA, HECC, CE certified
Customized Fit	FreeForm Adjustment system offers independent width and length adjustment
Comfort	Defense Cloud Technology THERMO CORE ZERO liner
Combo	Includes a PROFILE II Facemask Carbon steel construction with oval wire for enhanced vision CSA, HECC, CE certified
Custom Colors	Black, Navy, Blue, Red, White, Gold, Maroon, Phoenix, Wine, LA Purple, Green, Kelly, Dark Green, Royal, Brown, Vegas, Silver, Vegas Grey



SIZING CHART: SIZING AND CERTIFICATION

BAUER HELMETS AND COMBOS (Measurements in US Standard & Metric)

Fitting

1. Open helmet to its largest setting and position on the head so that the front edge of the helmet is one finger width above the eyebrows.
2. Slide the front and back portions of the helmet together until a comfortable, snug fit is achieved.
3. Tighten the adjustment mechanism.

Players should only use CSA, HECC and CE certified helmets. These helmets have stickers affixed that indicate their compliance with the applicable standards.

	inches	20.0	20.2	20.4	20.6	20.8	21.0	21.2	21.4	21.6	21.8	22.0	22.2	22.4	22.6	22.8	23.0	23.2	23.4	23.6	23.8	24.0	24.2	24.4	24.6	24.8	25.0	25.2	25.4	25.6	
	cm	51.0	51.5	52.0	52.5	53.0	53.5	54.0	54.5	55.0	55.5	56.0	56.5	57.0	57.5	58.0	58.5	59.0	59.5	60.0	60.5	61.0	61.5	62.0	62.5	63.0	63.5	64.0	64.5	65.0	
	mm	510	515	520	525	530	535	540	545	550	555	560	565	570	575	580	585	590	595	600	605	610	615	620	625	630	635	640	645	650	
Model	Size																														
HYPERLITE2	S/M																														
	M/L																														
RE-AKT 155	S																														
	M																														
	L																														
RE-AKT 85	S																														
	M																														
	L																														

BAUER



BAUER_TEAM_UNITY // BAGS

S23 BAUER CUSTOM PRO CARRY BAG - QT

SENIOR
JUNIOR
GOAL

[1063156]
[1063157]
[1063158]

32" x 20" x 17"
30" x 18" x 15"
40" x 22" x 22"

FEATURES AND TECHNOLOGY

Fabric Content Heavy duty Pro-Tarp construction

Features

YKK Zipper
Quick Panel for easy customization (15.5" x 9.5")
Oversized large main compartment with straight zipper
Internal mesh organizer panels
Player ID window
DryFlow Grommets
Reinforced HD webbing
One side logo print per bag

Colors

Black, Navy, Grey



S23 BAUER CUSTOM PRO DUFFLE - QT

SENIOR

[1063159]

22" x 14" x 12"

FEATURES AND TECHNOLOGY

Fabric Content Heavy duty Pro-Tarp construction

Features

Large main compartment with straight zipper
Internal mesh organizer panels
Player ID window
DryFlow Grommets
Reinforced HD webbing
Adjustable shoulder strap
One side logo print per bag

Colors

Black, Navy, Grey



S23 BAUER CUSTOM PRO BACKPACK - QT

SENIOR

[1061862]

22" x 14" x 12"

FEATURES AND TECHNOLOGY

Fabric Content Mix of Pro-Tarp and Black Polyester with reinforced backing construction

Features

Main compartment with round zipper
Internal mesh pocket & padded laptop pocket
Front dry pocket with external access
DryFlow Grommets
Two mesh water bottle pockets
Adjustable shoulder straps
One side logo print per bag

Colors

Black, Navy, Grey



BAG & STRAP SWATCHES

SELECT YOUR 2" OR 1" STRAP - OUTSIDE COLOR WILL ALWAYS BE BLACK OR WHITE ON BOTH CARRY AND DUFFLE'S

QT = QUICK-TURN - LOGO ONLY, NO STRAP COLOR OPTION



Black



Grey



Navy



White



Black



Navy

S23 BAUER CUSTOM PRO CARRY BAG - FC

SENIOR OCEAN	[1061830]	32" x 20" x 17"
SENIOR DS	[1061852]	32" x 20" x 17"
JUNIOR OCEAN	[1061844]	30" x 18" x 15"
JUNIOR DS	[1061855]	30" x 18" x 15"
GOAL OCEAN	[1061846]	40" x 22" x 22"
GOAL DS	[1061858]	40" x 22" x 22"

FEATURES AND TECHNOLOGY

Fabric Content Heavy duty Pro-Tarp construction

Features
 YKK Zipper
 Quick Panel for easy customization (15.5" x 9.5")
 Oversized large main compartment with straight zipper
 Internal mesh organizer panels
 Player ID window
 DryFlow Grommets
 Reinforced HD webbing
 One side logo print per bag

Colors Black, Navy, Grey



S23 BAUER CUSTOM PRO DUFFLE - FC

SENIOR OCEAN	[1061848]	22" x 14" x 12"
SENIOR DS	[1061860]	22" x 14" x 12"

FEATURES AND TECHNOLOGY

Fabric Content Heavy duty Pro-Tarp construction

Features
 Large main compartment with straight zipper
 Internal mesh organizer panels
 Player ID window
 DryFlow Grommets
 Reinforced HD webbing
 Adjustable shoulder strap
 One side logo print per bag

Colors Black, Navy, Grey



BAG & STRAP SWATCHES

SELECT YOUR 2" OR 1" STRAP - OUTSIDE COLOR WILL ALWAYS BE BLACK OR WHITE ON BOTH CARRY AND DUFFLE'S

FC = FULL-CUSTOM - LOGO AND 17 STRAP COLORS TO CHOOSE



S23 BAUER PRO CARRY BAG

COLOR	SR MATERIAL #	SR SIZE	JR MATERIAL #	JR SIZE	GOAL MATERIAL#	GOAL SIZE
Black	[1061832]	32" x 20" x 17"	[1061833]	30" x 18" x 15"	[1061834]	40" x 22" x 22"
Grey	[1061835]	32" x 20" x 17"	[1061836]	30" x 18" x 15"	[1061837]	40" x 22" x 22"
Navy	[1061838]	32" x 20" x 17"	[1061839]	30" x 18" x 15"	[1061840]	40" x 22" x 22"

FEATURES AND TECHNOLOGY

Fabric Content Heavy duty Pro-Tarp construction

Features YKK Zipper
Quick Panel for easy customization (15.5" x 9.5")
Oversized large main compartment with straight zipper
Internal mesh organizer panels
Player ID window
DryFlow Grommets
Reinforced HD webbing

Colors Black, Navy, Grey



S23 BAUER PRO DUFFLE

[1061842]

FEATURES AND TECHNOLOGY

Fabric Content Heavy duty Pro-Tarp construction

Features Large main compartment with straight zipper
Internal mesh organizer panels
Player ID window
DryFlow Grommets
Reinforced HD webbing
Adjustable shoulder strap

Colors Black



S23 BAUER PRO BACKPACK

[1061842]

FEATURES AND TECHNOLOGY

Fabric Content Mix of Pro-Tarp and Black Polyester with reinforced backing construction

Features Main compartment with round zipper
Internal mesh pocket & padded laptop pocket
Front dry pocket with external access
DryFlow Grommets
Two mesh water bottle pockets
Adjustable shoulder straps

Colors Black



TEAM STICK BAG

[1043309]

FEATURES AND TECHNOLOGY

Materials 600D polyester

Features Carries 50 sticks;
Large wheel base allows
for easy movement

Colors Black



TEAM JERSEY BAG

[1043374]

FEATURES AND TECHNOLOGY

Materials 600D polyester

Features Carry the whole
team's jerseys together

Colors Black





BAUER_TEAM_UNITY // GOAL

S23 VAPOR X5PRO GOAL PAD CUS-DS

SENIOR
INTERMEDIATE

[1062179]
[1062182]

XS, S, M, L, XL
XS, S, M, L

FEATURES AND TECHNOLOGY

Level	Performance
Material	CORTECH Calf Plate with Traditional Leather Front Cover
Flex Core	Soft Flex with New THIN geometry for full leg connection + CURV Stiff Thigh
Boot flex	FREE-FLEX 110 Degree Boot (Soft for Flexible Feel)
Toe	Centered Elastic Toe System (1060690)
Knee Block	STABILIFLEX Knee Block to limit over-rotation with some flexibility
Knee Wing	Comes with pads in box (Material 1060623 SUPREME PAD KNEE WING-PAIR)
Strapping	Tune Fit Strap System (1060213) featuring new lower calf strap for leg connectivity (1061743)
Calf Plate	Hybrid Calf Support System- single calf bracket for stable mobility
Color	Custom



S23 VAPOR X5PRO CATCHER CUS-DS

SENIOR
INTERMEDIATE

[1062180]
[1062183]

REG, FRT
REG, FRT

FEATURES AND TECHNOLOGY

Level	Performance
Material	Catchlite Palm and T-Trap for easy closure
Cuff	CURV Sheet for structure durability
Palm	Improved anatomical round shape in the palm for increased comfort
Backhand	Adjustable
Color	WHT (REG, FRT) WRD, WNV, WBK, BLK (REG only)
Fingers	Overlap pinky finger stall for added comfort and control
Protection	CURV + Rebound Control Foam to absorb puck impacts
Wrist Strap	Full Adjustment for tighter or looser fit
Fit	Full Hand Closure for more control
Weight	2.36 lbs



S23 VAPOR X5PRO BLOCKER CUS-DS

SENIOR
INTERMEDIATE

[1062181]
[1062184]

REG, FRT
REG, FRT

FEATURES AND TECHNOLOGY

Level	Performance
Blocker Board	Shocklite for fast rebounds
Palm	14.5" DuraConnekt palm with Piano finger adjustability for custom fit
Finger Protection	Reinforced finger protection with Shocklite Shield
Cuff	Low profile molded cuff for enhanced range of motion with Aerolite
Liner	DuraConnekt for increased durability and comfort
Color	WHT (REG, FRT) WRD, WNV, WBK, BLK (REG only)
BackHand	Lower Placement for more coverage
Side Plate	Molded F1 for reinforced shape
Weight	1.8 lbs



SIZING CHARTS: FINDING THE RIGHT FIT

BAUER GOALIE PADS (Measurements in US Standard & Metric)

Our simplified sizing system helps you find the pad size that is a best fit for each player:

SENIOR	PAST SIZING	32	33	34	35	36	37
	PAD SIZING	X-SMALL	SMALL	MEDIUM	LARGE	XLARGE	XXLARGE
INTERMEDIATE	PAST SIZING	29	30	31	32	69.9	74
	PAD SIZING	X-SMALL	SMALL	MEDIUM	LARGE	31"	32"
JUNIOR	PAST SIZING	24	26	28	30	78.7	81.3
	PAD SIZING	X-SMALL	SMALL	MEDIUM	LARGE	35"	35.75"
YOUTH/PRODIGY	PAST SIZING		20	22	24	89	90.8
	PAD SIZING		SMALL	MEDIUM	LARGE		35.75"

BAUER CATCH GLOVE / BLOCKER (Measurements in US Standard & Metric)

HAND SIZE	CUSTOM PALM SIZING					INTERMEDIATE	YOUTH
	7.5" - 8"	7" - 7.5"	8" - 8.5"	7.5" - 8"	7" - 7.5"	6" - 7"	5.5" - 6.5"
19cm - 20.5cm	18cm - 19cm	20.5cm - 21.5cm	19cm - 20.5cm	18cm - 19cm	15cm - 18cm	14cm - 16.5cm	
	STOCK	INTERMEDIATE	XLARGE	STOCK	INTERMEDIATE		
	CATCHER		BLOCKER				

BAUER GOAL PANTS (Measurements in US Standard & Metric) *Measure waist circumference where your pants naturally sit, then subtract 3" for men, 4" for women

SIZE	YOUTH		JUNIOR		INTERMEDIATE			SENIOR			
	S/M	L/XL	S/M	L/XL	S	M	L	S	M	L	XL
WEIGHT [LBS]	40 - 53	46 - 57	55 - 68	62 - 79	77 - 90	88 - 99	97 - 130	99 - 150	130 - 170	150 - 190	180+
[KG]	18 - 24	21 - 26	25 - 31	28 - 36	35 - 41	40 - 45	44 - 59	45 - 68	59 - 77	68 - 86	82+
HEIGHT [FT]	3'5" - 3'11"	3'8" - 4'2"	4'1" - 4'8"	4'4" - 4'11"	4'10" - 5'2"	5'1" - 5'5"	5'4" - 5'7"	5'5" - 5'9"	5'7" - 5'11"	5'9" - 6'1"	5'11+
[M]	1.04 - 1.19	1.12 - 1.27	1.24 - 1.42	1.32 - 1.5	1.47 - 1.57	1.55 - 1.65	1.63 - 1.7	1.65 - 1.75	1.7 - 1.8	1.75 - 1.85	1.8+
PANT SIZE [IN]	20" - 22"	21" - 23"	22" - 25"	23" - 26"	25" - 28"	27" - 30"	29" - 32"	30" - 34"	32" - 36"	34" - 38"	36"+
[CM]	51 - 56	53 - 58	56 - 64	58 - 66	64 - 71	69 - 76	74 - 81	76 - 86	81 - 91	86 - 97	91+

COLORS

GOAL SWATCHES



DS S23 BAUER GOAL SPEED PANT RT-DS

SENIOR [1063006] S, M, L, XL
 INTERMEDIATE [1063007] S, M, L
 JUNIOR [1063116] S/M, L/XL

MINIMUM OF 12 UNITS PER PANT / SHELL TYPE
 DIRECT SHIP ITEMS: RUSH 60 DAYS

FEATURES AND TECHNOLOGY

Construction Removable (Inner) - Dual Inner/Outer
 Volume Fit Thick Foam for protection and coverage
 Reinforced Velcro Double Adjustment Pillows
 Tucked Free-Flex (Skate Lace Style) for mobility and pro look
 Dynamic Two Flex with Double Adjustment Pillows
 Internal Loop
 Thermomax + for breathability
 Extension Fit System

Colors Custom color menu

Embellishments Direct Embroidered Bauer logo
 Embroidered Patch Team logo



S20 BAUER ELITE GOAL PANT

SENIOR [1061618] S, M, L, XL
 SENIOR MTO [1061619] S, M, L, XL
 INTERMEDIATE [1061620] S, M, L
 INTERMEDIATE MTO [1061621] S, M, L

FEATURES AND TECHNOLOGY

Construction Removable (Inner) - Dual Inner/Outer
 Volume Fit Thick Foam for protection and coverage
 Reinforced Velcro Double Adjustment Pillows
 Tucked Free-Flex (Skate Lace Style) for mobility and pro look
 Dynamic Two Flex with Double Adjustment Pillows
 Internal Loop
 Thermomax + for breathability
 Extension Fit System

Colors Black, MTO - Navy and Red

Embellishments Direct Embroidered Bauer logo



CUSTOM GOAL PANT SHELL

SENIOR DS [1041431] S, M, L, XL, XXL
 INTERMEDIATE DS [1041432] S, M, L

MINIMUM OF 12 UNITS PER PANT / SHELL TYPE
 DIRECT SHIP ITEMS: RUSH 60 DAYS

FEATURES AND TECHNOLOGY

Construction Abrasion-resistant hip overlay (800 denier nylon/420 shell); Shell size is typically one size larger than pant size

Colors Custom color menu

Embellishments Direct Embroidered Bauer log
 Embroidered Patch Team logo



STOCK BAUER GOAL SHELL

SENIOR [1048526] S, M, L, XL, XXL
 INTERMEDIATE/JR [1048527] S, M, L

FEATURES AND TECHNOLOGY

Construction Abrasion-resistant hip overlay (800 denier nylon/420 shell); Shell size is typically one size larger than pant size

Colors Black, Navy, Blue, Red

Embellishments Direct Embroidered Bauer logo





PADS	[1063425]	S, M, L
CATCH-GLOVE	[1063440]	REG/FRT
BLOCKER	[1063430]	REG/FRT
CHEST PROTECTOR	[1063457]	S/M, L/XL
PANTS	[1063355]	S/M, L/XL
STICK	[1063779]	20"

Inspired by every youth hockey player's dream of playing like the pros, the BAUER PRODIGY™ collection is built exclusively for them. The combination of lightweight materials, composite durability, and scaled down size delivers the right amount of performance on the ice. The PRODIGY™ badge represents unmatched value on the shelf, and a youth specific design that allows every young player to focus on enjoying the game.

PADS



FEATURES AND TECHNOLOGY

Features	115 Degree Soft for flexibility Standard Centered Bungee Reinforced Large Block for coverage and comfort Adjustable Sewn-in Calf Protection for comfort and protection Tapered Reinforced for comfortable stability Prodigy Thigh Guard attached
Colors	Black & White

CATCH GLOVE



FEATURES AND TECHNOLOGY

Features	Molded PU with Foam Layering for Protection and Easy Closure One Piece for Structure Free-Flex Nylon for Ease of Movement Sublimated Nash for Comfort 3D Mesh Comfort Strap for Adjustability
Colors	Black & White

BLOCKER



FEATURES AND TECHNOLOGY

Features	Dual-Layered Reinforced Blocker Board Reinforced 1-Piece with Free-Range Stick Integration Integrated Coverage Dual-Adjustable with Neoprene Stretch Inner Cuff
Colors	Black & White

CHEST PROTECTOR



FEATURES AND TECHNOLOGY

Features	Dual Density Foam for Protection Collar Adjust / Arm Shoulder Straps Improved Coverage Sternum Thickened Cushioned Nylon
Colors	Black

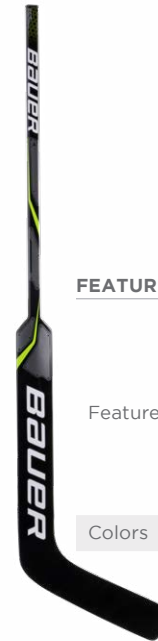
PANTS



FEATURES AND TECHNOLOGY

Features	Hybrid Sublimated/Non Sublimated for Style and Comfort S23 High-Volume Fit for Comfort External Belt Loop for Knee Guard
Colors	Black

STICK



FEATURES AND TECHNOLOGY

Features	Carbon Wrap Flat Geometry Carbon Wrap Short Shaft Carbon Wrap Short Shaft Stock Handle
Colors	Black

SIZING CHARTS

BAUER PRODIGY (Measurements in US Standard & Metric)

SIZE		S	M	L
WEIGHT	[LBS]	35 - 45	45 - 60	60 - 70
HEIGHT	[IN]	3'0" - 3'6"	3'5" - 3'11"	3'1"-10 - 4'4"

HAND SIZE	[IN]	4.5" - 5.5"
	[CM]	11.5 - 14



BAUER_TEAM_UNITY // UNIFORMS

FLEX PRACTICE JERSEYS

COLOR	SR MATERIAL #	SR SIZES	YTH MATERIAL #	YTH SIZES
Black	[1054884]	XS/S, M, L, XL, XXL, AGC	[1054925]	XS/S, M/L, YGC
White	[1054921]	XS/S, M, L, XL, XXL, AGC	[1054931]	XS/S, M/L, YGC
Silver	[1054924]	XS/S, M, L, XL, XXL, AGC	[1054936]	XS/S, M/L, YGC
Blue	[1054886]	XS/S, M, L, XL, XXL, AGC	[1054926]	XS/S, M/L, YGC
Red	[1054888]	XS/S, M, L, XL, XXL, AGC	[1054928]	XS/S, M/L, YGC
Kelly	[1054890]	XS/S, M, L, XL, XXL, AGC	[1054929]	XS/S, M/L, YGC
Navy	[1054922]	XS/S, M, L, XL, XXL, AGC	[1054933]	XS/S, M/L, YGC
Orange	[1054923]	XS/S, M, L, XL, XXL, AGC	[1054934]	XS/S, M/L, YGC

FEATURES AND TECHNOLOGY

Fabric Content	100% POLYESTER (Weight 160g/m2)
Fit	Hockey fit
Features	Entry level practice jersey Available in 9 colors Bauer logo
Customization	Can be post embellished



FLEX PRACTICE SOCKS

COLOR	SR MATERIAL #	SR SIZES	YTH MATERIAL #	YTH SIZES
Black	[1054598]	S/M, L/XL	[1054577]	S/M, L/XL
White	[1054597]	S/M, L/XL	[1054576]	S/M, L/XL
Silver	[1054579]	S/M, L/XL	[1054567]	S/M, L/XL
Blue	[1054594]	S/M, L/XL	[1054573]	S/M, L/XL
Red	[1054595]	S/M, L/XL	[1054574]	S/M, L/XL
Kelly	[1054591]	S/M, L/XL	[1054570]	S/M, L/XL
Navy	[1054596]	S/M, L/XL	[1054575]	S/M, L/XL
Orange	[1054580]	S/M, L/XL	[1054569]	S/M, L/XL

FEATURES AND TECHNOLOGY

Fabric Content	100% POLYESTER (Weight 160g/m2)
Fit	Hockey fit
Features	Entry level practice sock Available in 9 colors Bauer logo



SIZING CHARTS: FINDING THE RIGHT FIT

FLEX SERIES - PRACTICE JERSEYS (Measurements in US Standard & Metric)

SIZE	YOUTH		SENIOR					GOAL		
	YXS/S	YM/L	AXS/S	AM	AL	AXL	AXXL	YGC	IGC	AGC
CHEST [IN]	19"	22.5"	25.25"	26.5"	27.5"	29.125"	30.75"	25.5"	26.5"	32.375"
1" Below Arm Hole [CM]	48.3	57.2	64.1	67.3	69.9	74	78.1	64.8	67.3	82.2
FRONT BODY LENGTH [IN]	24.5"	27"	29"	30"	31"	32"	33"	29"	30"	34"
High Point Shoulder [CM]	62.2	68.5	73.7	76.2	78.7	81.3	83.8	73.7	76.2	86.4
SLEEVE LENGTH [IN]	25"	26.5"	31.5"	34.25"	35"	35.75"	36.5"	29"	33.25"	35"
Center Back Neck [CM]	63.5	67.3	80	87	89	90.8	92.7	73.7	84.5	89

FLEX - PRACTICE SOCKS (Measurements in US Standard & Metric)

SIZE	YOUTH		SENIOR	
	YS/M	YL/XL	AS/M	AL/XL
FRONT & BACK LENGTH [IN]	20"	24"	28"	30"
From Top Edge to Hem [CM]	50.8	60.7	71.1	76.2
KNEE [IN]	8.25"	9.5"	10.5"	11.25"
Width [CM]	21	24.1	26.7	28.6
TOP OPENING WIDTH [IN]	7.75"	9"	10"	10.75"
Relaxed [CM]	19.7	22.9	25.4	27.3
TOP OPENING WIDTH [IN]	10.25"	11.5"	12.5"	13.25"
Extended [CM]	26	29.2	31.8	33.7
SHIN PAD [IN]	9 - 10"	11 - 13"	14 - 15"	16 - 17"
Size Reference [CM]	22.9 - 25.4	27.9 - 33	35.6 - 38.1	40.6 - 43.2

COLORS

FLEX SWATCHES



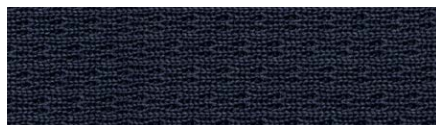
Black



White



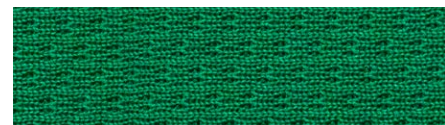
Silver



Navy



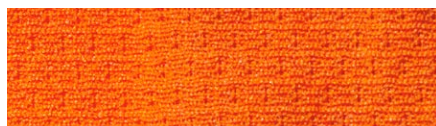
Blue



Kelly



Red



Orange

NEXUS S22 LEAGUE GRIP STICK

S22 NEXUS LEAGUE STICK

DEVELOPED EXCLUSIVELY FOR ELITE LEVEL TEAMS, THIS BAUER NEXUS TEAM STICK IS DESIGNED WITH HIGH LEVEL PERFORMANCE IN MIND. BUILT ON THE NEXUS FOUNDATION OF POWER, THIS STICK MAXIMIZES EVERY SHOT WITH AN AMPLIFIED MID-KICK THAT INCREASES ENERGY TRANSFER WHILE SHOOTING. THIS EXCLUSIVE STICK IS PRICED SO THAT YOUR ENTIRE TEAM CAN PERFORM TO ITS HIGHEST LEVEL.



KEY TECHNOLOGIES:

PENDING UPDATE

Square Shaft with Rounded Corners

Optimized Balance Point

Monocomp Construction

Carbon Fiber Blended Construction



STICK DETAILS

MATERIAL NUMBERS	MATERIAL DESCRIPTION	L/R	PATTERNS
1060022	S22 Nexus League Grip Stick SR - 95	L/R	P92, P88, P28, P92M
1060023	S22 Nexus League Grip Stick SR - 87	L/R	P92, P88, P28, P92M
1060025	S22 Nexus League Grip Stick SR - 77	L/R	P92, P88, P28, P92M
1060026	S22 Nexus League Grip Stick SR - 70	L/R	P92, P88, P28, P92M
1060027	S22 Nexus League Grip Stick INT - 65	L/R	P92, P88, P28, P92M

LOGO REQUESTS

CUSTOMIZER LOGO REQUEST

A HOW TO SUBMIT A LOGO

When submitting a logo for a team's locker, the logo must be in a vector format (e.g.: .Ai / .Eps / .Pdf). The logo within this file should be converted to vectors and be an editable file.

To submit a logo, please fill out the logo request form and email to: logorequests@bauer.com

B COLOR SPECIFICATIONS

During the logo submission process, team colors need to be clearly specified. Our customizer offers a wide range of colors so in order to make sure that team colors are correct, they need to be submitted properly.

When filling out the logo request form, please identify the team's colors by name or by using the Pantone number, if available, in the notes section. Pantone numbers are preferred as they are the industry standard for the color matching process.

Please note: colors on screen may look different than physical samples. To ensure a close match, please try to provide as much information as possible when submitting logos so that we can do our best to match the team's colors and expectations.

i) UNACCEPTABLE FILES



Non-vectorized artwork is not ideal due to the fact that they are generally low resolution and become blurry / pixelated when scaled up

NON-ACCEPTABLE FILES

.JPG / .BMP / .GIF / .TIFF / .PNG

i) ACCEPTABLE FILES



Vector artwork allows you to scale an image to any dimension without losing any quality.

ACCEPTABLE FILES

.AI / .EPS / .PDF / .SVG

CORPORATE OFFICES

UNITED STATES

100 DOMAIN DRIVE
EXETER, NH 03833
U.S.A

CANADA

6925 CENTURY AVENUE, SUITE 6000
MISSISSAUGA, ON L5N 0E3
CANADA

EUROPE

LUDWIGSPLATZ 18
83022 ROSENHEIM
GERMANY

NORDICS

GRIMBOASEN 10A
SE-41749 GOTHENBURG
SWEDEN

© 2024 BAUER HOCKEY, LLC (U.S.), BAUER HOCKEY LTD. (CAN) AND ITS AFFILIATES. ALL RIGHTS RESERVED. BAUER, RE-AKT, SUPREME, TOTALONE, ONE80, X7.0, THERMO MAX, MAX-SORB, NEXUS, HYPERLITE AND PRODIGY ARE TRADEMARKS OF BAUER HOCKEY, LLC., AND/OR ITS AFFILIATES.

VAPOR IS A REGISTERED TRADEMARK OWNED BY NIKE, INC. AND/OR ITS AFFILIATES AND USED UNDER LICENSE. MICROBAN IS A REGISTERED TRADEMARK OF MICROBAN PRODUCTS COMPANY.

NEW ERA, 39THIRTY, 59FIFTY, 9FIFTY, 9FORTY, 9TWENTY, NE AND THE NEW ERA FLAG LOGO ARE ALL TRADEMARKS OF THE NEW ERA CAP COMPANY. HDO OPTICS TRADEMARK AND PATENTED TECHNOLOGY USED UNDER LICENSE FROM OAKLEY.

PORON AND PORON XRD ARE REGISTERED TRADEMARKS OF ROGERS CORPORATION.

3M THINSULATE AND SCOTCHGUARD ARE REGISTERED TRADEMARKS OF 3M.

YKK IS A REGISTERED TRADEMARK OF YKK CORPORATION.



BAUER

BAUER_TEAM_UNITY_CATALOG